



Armenian Water and Sewerage Company

Kamo Aghababyan
Technical Director

Results of SAUR management contract

Indicators	2005	2007 July	Difference
Number of consumers (thousand abonent)	262.3	267.2	4.6
Installation of water meters (thousand pieces)	98.1	162.3	64.2
Collection level (percent)	47.9	75	27.1
Number of staff (people)	2610	1770	- 840

Main Indicators of AWSC (First part)

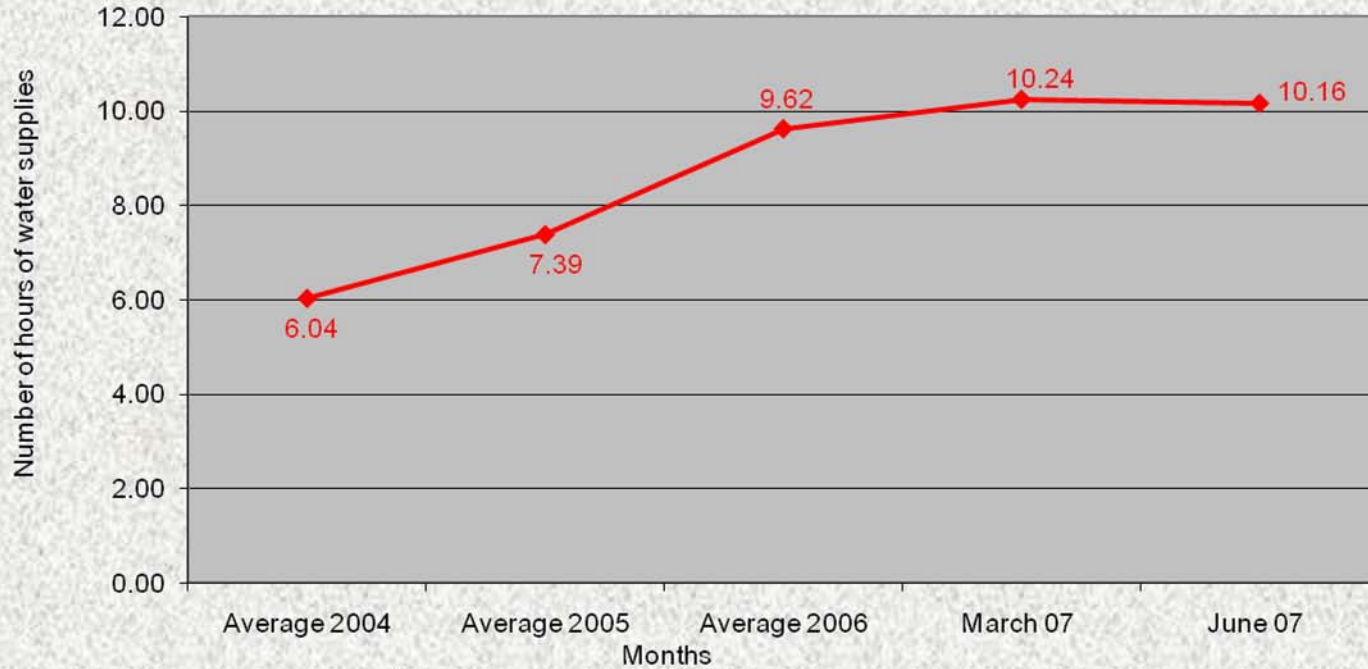
№	INDICATORS	UNIT	BASE YEARS	Average 2005	Average 2006	2 nd Quarter 2006	2 nd Quarter 2007	Variation between 2 nd Q 2006 and 2 nd Q 2007
1	Weighted average number of daily hours of drinking water service	hours/day	6.04	7.39	9.62	9.80	10.16	3.6%
2	% of individual subscribers billed on the basis of metered consumption	%	40.2	53.6	57.3	55.59	58.44	5.1%
3	Weighted average water bacteriological safety compliance	%	93.8	93.8	93.9	93.22	94.60	1.5%
4	Company working ratio	%	194.9	176.4	138.8	138.30	138.09	-0.2%
5	% of cities with minimal daily hours of services	%	68.1	74.1	80.1	80.00	84.11	5.1%
6	% of block apartment buildings with individual or common block meter	%	38.6	56.3	61.6	59.39	63.42	6.8%
7	% of block apartment buildings under contractual agreement with the company	%						
8	Revenue collected from domestic subscribers per registered inhabitant	Drams/month	166	181	242	236.28	239.29	1.3%

10/31/2007

Main Indicators of AWSC (Third part)

№	INDICATORS	UNIT	BASE YEARS	Average 2005	Average 2006	2 nd Quarter 2006	2 nd Quarter 2007	Variation between 2 nd Q 2006 and 2 nd Q 2007
17	Ratio of metered final consumption (m3) to water production at water catchments levels	%	6.8	6.4	7.8	8.10	7.95	-1.9%
18	Working ratio for branches with gravity systems	%	89.7	121.0	97.5	94.50	97.59	3.3%
19	Working ratio for branches with pumping stations or treatment plants	%	223.3	196.8	155.2	154.27	152.07	-1.4%
20	Electricity cost as % of revenue collected in systems with pumping or treatment plants	%	72.6	63.1	42.6	38.79	39.43	1.7%
21	Amount of chlorine effectively used per equivalent inhabitant per year	g/cap/year						
22	Total staff per 1000 individual subscribers	u	9.45	8.34	7.15	7.11	6.82	-4.1%
23	Staff and assignment contractors total costs as % of collected revenue	%	70.2	68.9	61.9	63.50	64.20	1.1%
24	Electricity consumption	kwh/m3	0.43	0.38	0.31	0.29	0.28	-2.6%
25	% of water disinfected	%	60.9	67.8	80.0	75.66	88.50	17.0%

WEIGHTED AVERAGE NUMBER OF DAILY HOURS OF DRINKING WATER SERVICE IN JUNE 2007

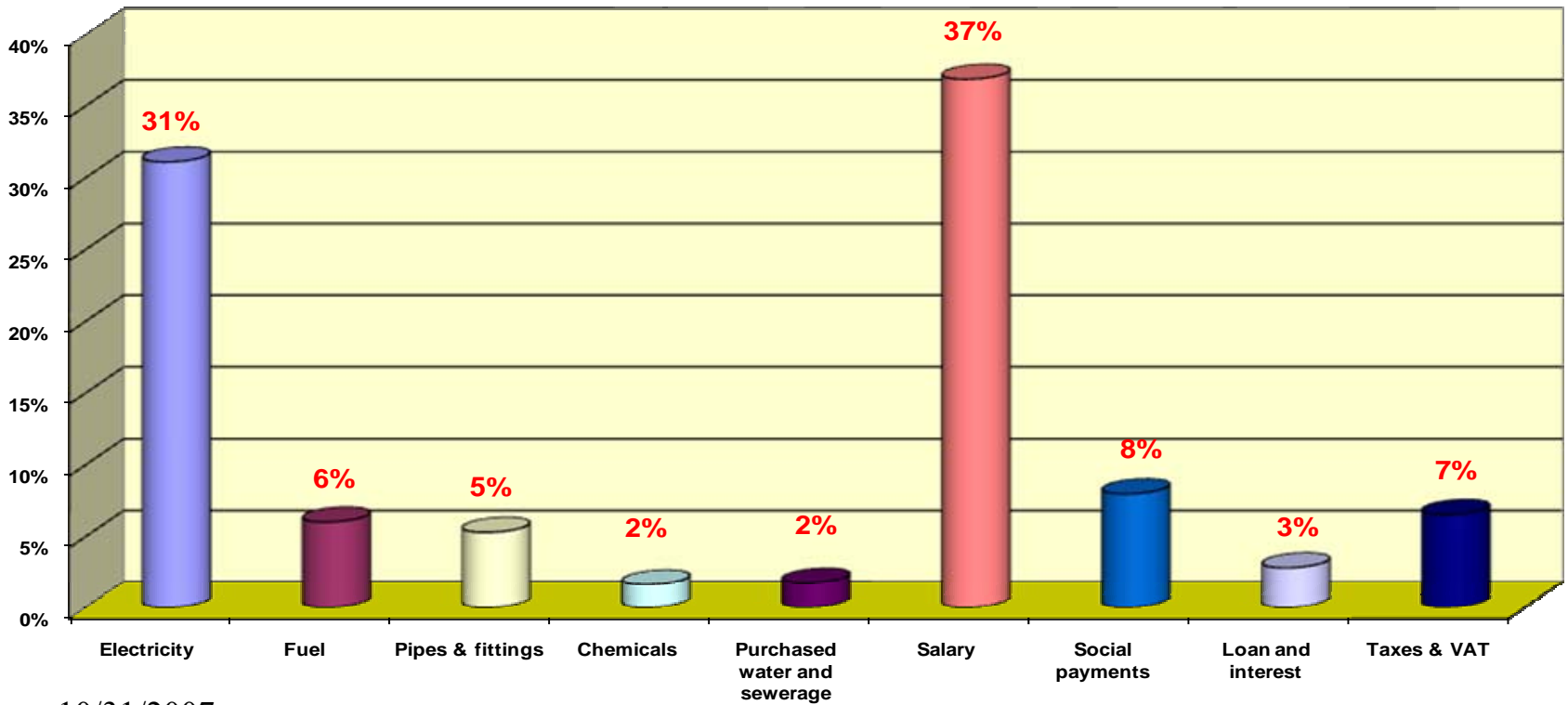


COMPANY WORKING RATIO



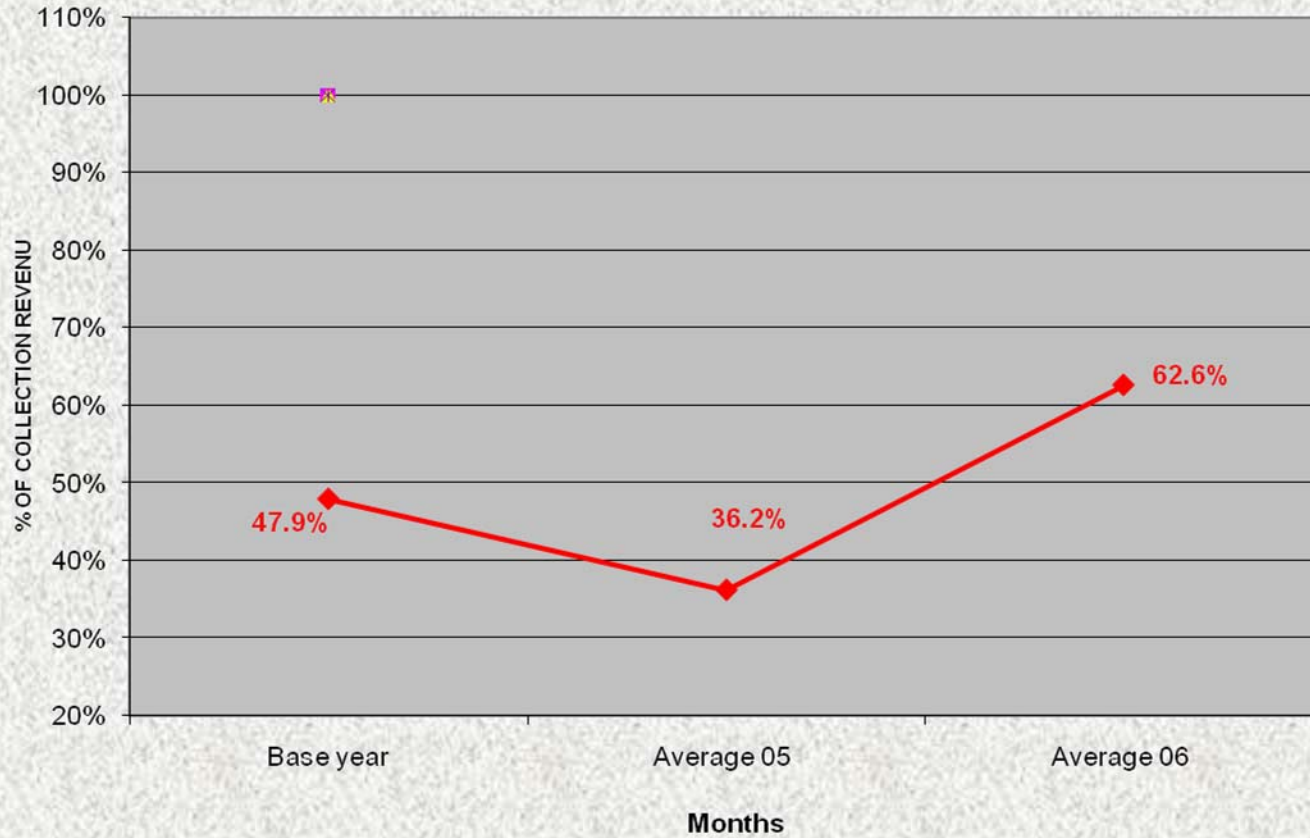
10/31/2007

THE MAIN OPERATING EXPENSES

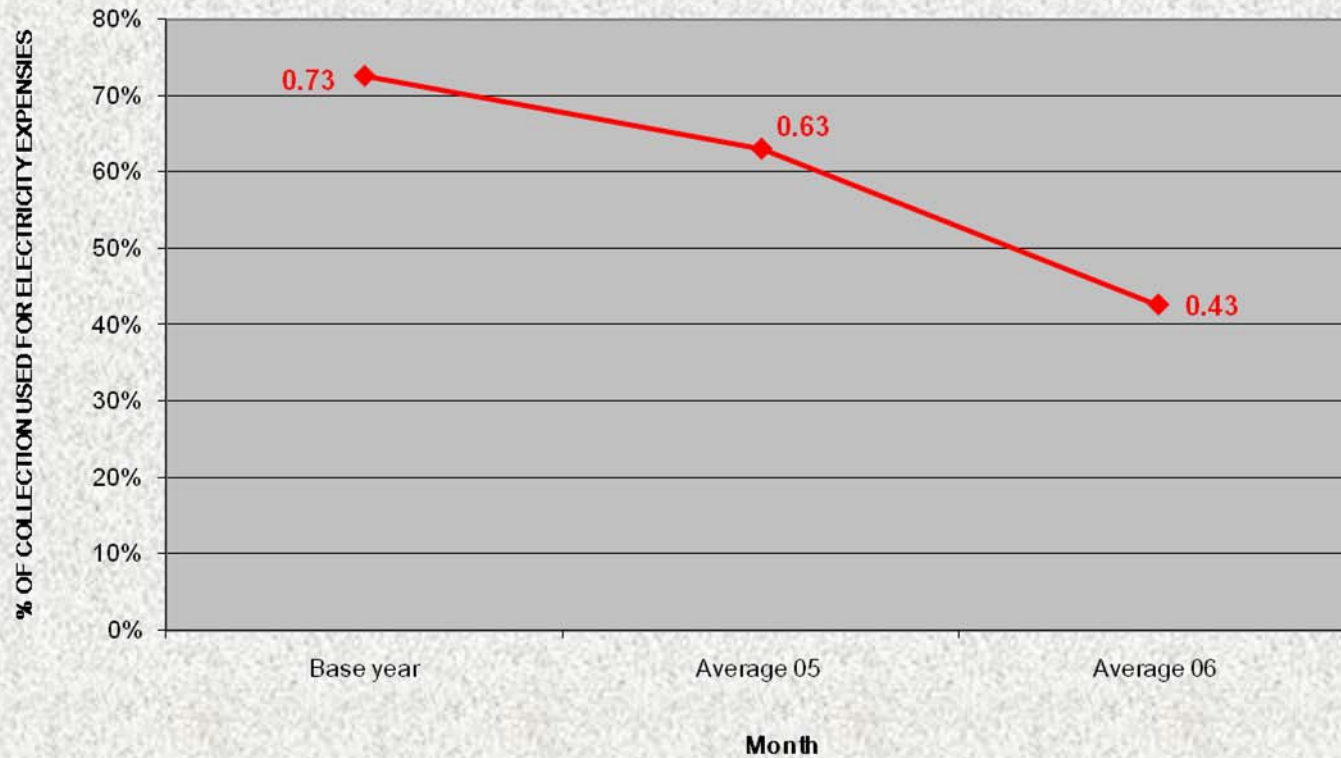


10/31/2007

COLLECTION RATIO (EXCLUDING BUDGET ORGANISATIONS)



ELECTRICITY COST AS % OF REVENUE COLLECTED IN SYSTEMS WITH PUMPING OR TREATMENT PLANTS



THANK YOU